



大阪電機工業株式会社

船舶用照明器具、配線器具、信号器具及び電装補助材料の製造・販売

カテゴリ別No.26 船用蛍光灯 カタログ



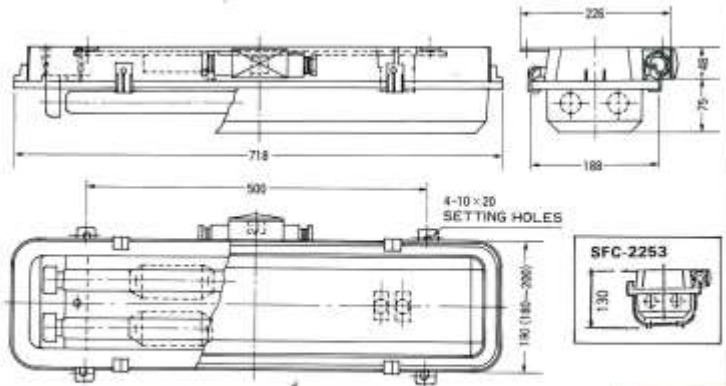
◀ABSRESIN/PBTRESIN TYPE▶ ※NO RUST & LIGHT WEIGHT!!



SFC-2252-2GLAND BOX TYPE



SFC-2253-2GLAND BOX TYPE



Specifications

Material: PBT or ABS resin & SUS setting foot × 2
(Base Color 7.5BG 7/2)
Diffuser: Clear: Styrol or Polycarbonate
Cable hole: Select (P-3 Cable Holes)
Option parts: R type R=Emergency Lamp

Model	Lamp	Lamp pitch	IP 56 Weight (kg)
SFC-2152	20×1	—	3.45
SFC-2252	20×2	70	4.1
SFC-2153	SFC-2152 with SUS guard		3.85
SFC-2253	SFC-2252 with SUS guard		4.5

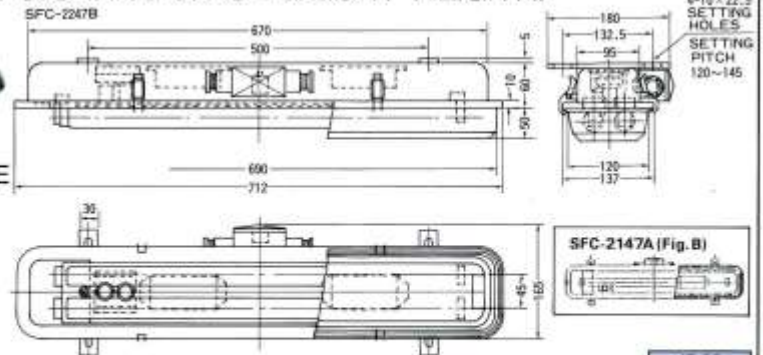
◀SLIM TYPE▶ ※LOW COST & SAVING SPACE & LIGHT WEIGHT!!



SFC-2247-2 GLAND BOX TYPE



SFC-2248-2 GLAND BOX TYPE



Specifications

Material: Steel plate (Painting)
Diffuser: Clear: Styrol or Polycarbonate
Cable hole: Select (P-3 Cable Holes)
Option Parts: R type R=Emergency Lamp

Model	Lamp	Dimension	Glove Stopper	IP 56 Weight (kg)
SFC-2147-A	20W×1	Fig.-B	2	2.95
SFC-2247-A	20W×2	Fig.-B	2	3.65
SFC-2147-B	20W×1	Fig.-A	4	3.0
SFC-2247-B	20W×2	Fig.-A	4	3.7
SFC-2148	20W×1	SFC-2147-B with Steel Guard	4	3.3
SFC-2248	20W×2	SFC-2247-B with Steel Guard	4	4.0

Steel Guard (Painting)

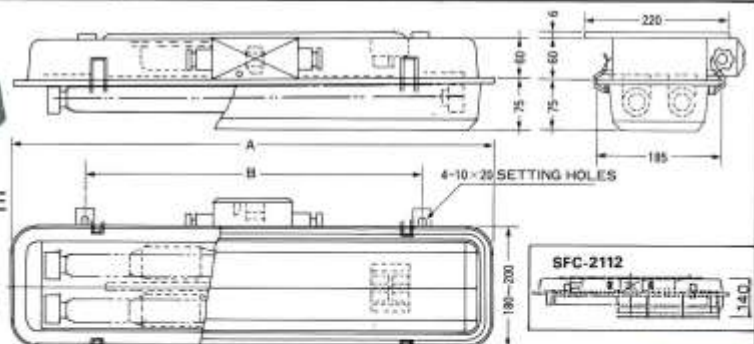
◀STANDARD TYPE▶



SFC-2201-2 GLAND BOX TYPE



SFC-2210-2 GLAND BOX TYPE



Specifications

Material: Steel plate or SUS plate (Painting)
Diffuser: Clear: Styrol or Acrylite or Polycarbonate
Cable hole: Select (P-3 Cable Holes)
Option parts: R type R=Emergency Lamp

Model	Lamp	Dimension		IP 56 Weight (kg)
		A	B	
SFC-2103	20W×1	715	500	3.6
SFC-2201	20W×2	715	500	4.2
SFC-4103	40W×1	1335	1100	7.7
SFC-4209	40W×2	1335	1100	9.8
SFC-2112	20W×1	SFC-2103 with Steel or SUS guard		4.0
SFC-2210	20W×2	SFC-2201 with Steel or SUS guard		4.8
SFC-4112	40W×1	SFC-4103 with Steel or SUS guard		8.4
SFC-4210	40W×2	SFC-4209 with Steel or SUS guard		10.5

Steel Guard (Painting)

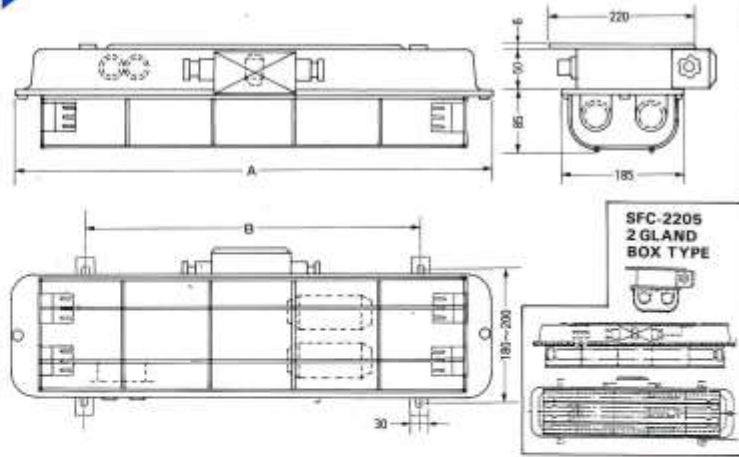
◀STANDARD GUARD TYPE▶



SFC-2205-2 GLAND BOX TYPE



SFC-2207-2 GLAND BOX TYPE



Specifications

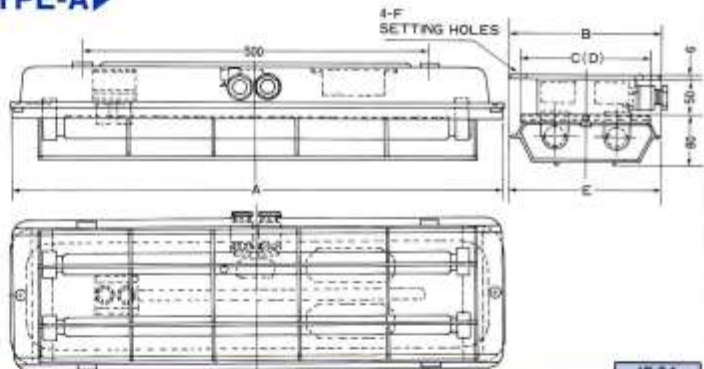
Material: Steel plate or SUS plate (Painting)
 Diffuser: _____
 Cable hole: Select (P-3 Cable Holes)
 Option parts: R type R—Emergency Lamp

Type	Model	Lamp	Dimension		Weight (kg)	Standard Parts		
			A	B		Lamp Socket	Glow Lamp Socket	IP
WT	SFC-2108	20W×1	715	500	4.0	WT-27	WG40	IP 44
	SFC-2207	20W×2	715	500	5.2			
	SFC-4108	40W×1	1335	1100	7.5			
	SFC-4207	40W×2	1335	1100	9.9			
DP	SFC-2106	20W×1	715	500	3.8	T-16SL	G43	IP 34
	SFC-2205	20W×2	715	500	5.0			
	SFC-4106	40W×1	1335	1100	7.3			
	SFC-4205	40W×2	1335	1100	9.7			

◀WING REFLECTOR · GUARD TYPE-A▶



SFC-2242-2 GLAND TYPE



Specifications

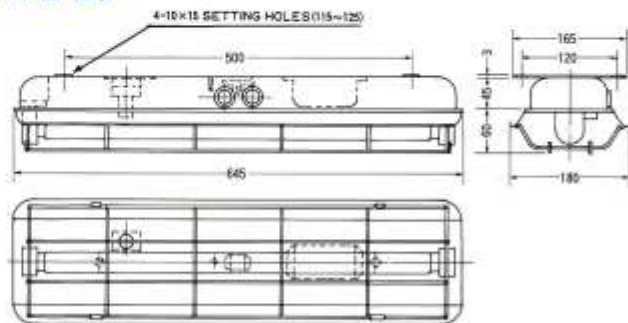
Material: Steel plate (Painting)
 Diffuser: _____
 Cable hole: Bushing or Gland (P-3 Cable Holes)
 Option parts: R type R—Emergency Lamp

Model	Lamp	Dimension						IP 34	Weight (kg)
		A	B	C	D (Setting pitch)	E	F		
SFC-2142	20W×1	712	180	132.5	120~145	185	10×22.5	3.3	
SFC-2242	20W×2	710	220	190	180~200	220	10×20	4.6	

◀WING REFLECTOR · GUARD TYPE-B▶



SFC-2133-2 BUSHING TYPE


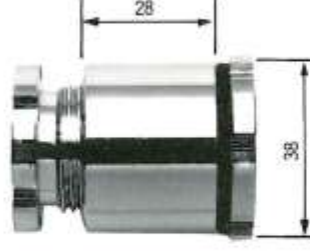






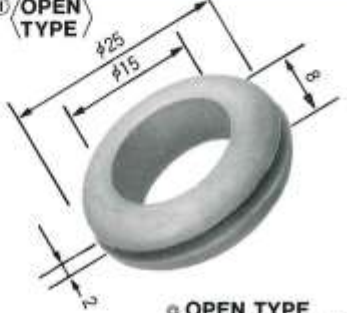




Specifications

Material: Steel plate (Painting)
 Diffuser: _____
 Cable hole: Gland or Bushing (P-3 Cable Holes)
 Option parts: R type R—Emergency Lamp

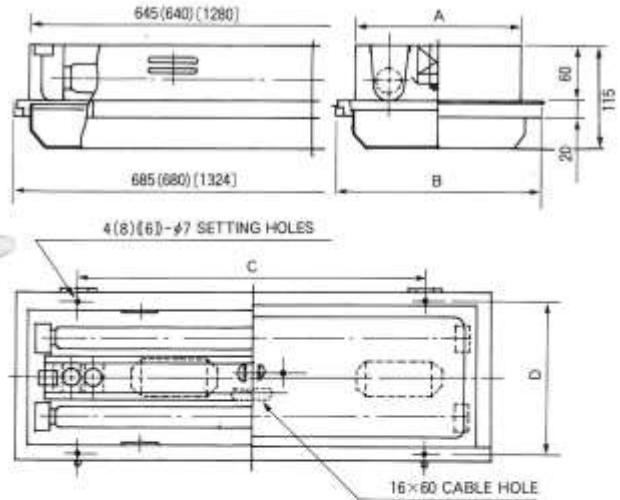
Model	Lamp	Dimension	Lamp Socket	IP 34	Weight (kg)
SFC-2133	20W×1	Fig.	T-16		2.8
SFC-2134	20W×1	Fig. (RAPID START)	WT-27		2.6

船用荧光灯

<p>φ15 CABLE GLAND:BRASS</p> <p>Ⓐ</p> 	<p>φ20 CABLE GLAND:BRASS</p> <p>Ⓑ</p> 	<p>φ15 CABLE GLAND: POLYCARBONATE</p> <p>Ⓒ</p> 
<p>φ20 CABLE GLAND: POLYCARBONATE</p> <p>Ⓓ</p> 	<p>φ15 GLAND×2 TERMINAL BOX</p> <p>Ⓔ (TERMINAL BOARD×1)[※] (EARTH TERMINAL×1)</p>  <p>H-48</p>	<p>φ15 GLAND×4 TERMINAL BOX</p> <p>Ⓕ (TERMINAL BOARD×1)[※] (EARTH TERMINAL×1)</p>  <p>H-75</p>
<p>φ20 GLAND×2 TERMINAL BOX</p> <p>Ⓖ (TERMINAL BOARD×1)[※] (EARTH TERMINAL×1)</p>  <p>H-48</p>	<p>φ20 GLAND×4 TERMINAL BOX</p> <p>Ⓗ (TERMINAL BOARD×1)[※] (EARTH TERMINAL×1)</p>  <p>H-82</p>	<p>CABLE BUSHING: NEOPRENE(φ15)</p> <p>Ⓖ (OPEN TYPE)</p>  <p>○ OPEN TYPE ○ KNOCK OUT TYPE</p>
<p>CABLE COAMING: POLYCARBONATE</p> <p>Ⓙ</p>  <p>CABLE HOLE-20×60</p>	<p>CABLE COAMING ① PACKING</p> <p>SYNTHETIC RUBBER (OPTION)</p>  <p>CABLE HOLES-HOLE PITCH 16mm OPEN HOLE: φ10×1 KNOCK OUT HOLE: φ7×3</p>	<p>[※]</p> <p>○ TERMINAL BOARD JIS F8811 O-20-2 (2 GLAND TYPE) O-20-4 (4 GLAND TYPE)</p> <p>○ EARTH TERMINAL JIS F8812 2F-20A</p>



SFC-2314



Specifications

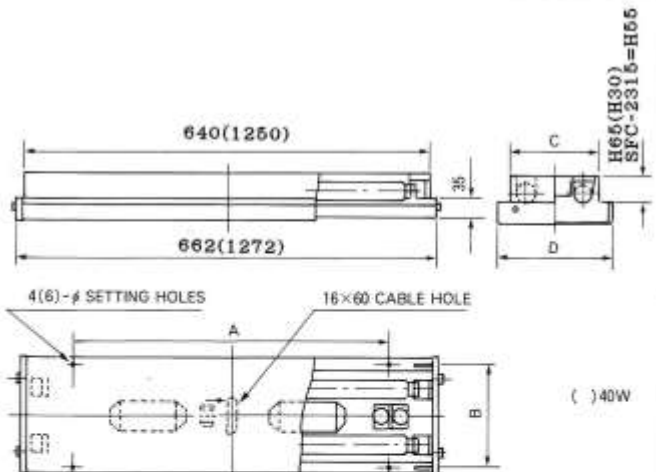
Material: Steel plate (Painting)
 Diffuser: MILKY or CLEAR or DIAMOND CUT (CLEAR): Acrylite
 Cable hole: Fig.
 Option parts: R type R—Emergency Lamp

() SFC-2414	() SFC-2314
() SFC-4114	SFC-4114
() SFC-4214	SFC-4214

Model	Lamp	Dimension				IP 20 Weight (kg)
		A	B	C	D	
SFC-2114	20W × 1	114	162	500	139	3.2
SFC-2214	20W × 2	190	237	500	214	5.2
SFC-2314	20W × 3	315	362	500	169.5/169.5	7.0
SFC-2414	20W × 4	635	680	500 Hole pitch 650	500	10.6
SFC-4114	40W × 1	122	170	500/500	146	4.5
SFC-4214	40W × 2	212	280	500/500	236	8.5



SFC-2315



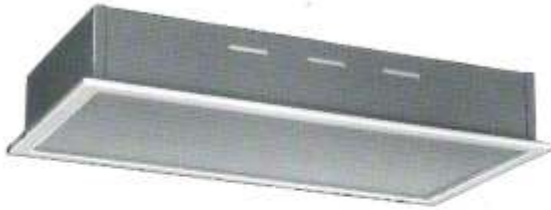
Specifications

Material: Steel plate (Painting)
 Diffuser: MILKY or DIAMOND CUT (CLEAR) or CLEAR: Acrylite
 Cable hole: Fig.
 Option parts: R type-REFLECTOR (Except SFC-2315-H30 TYPE)
 R—Emergency Lamp
 CLEAR(H-30→H65)

Model	Lamp	Dimension				IP 20 Weight (kg)
		A	B	C	D	
SFC-2115	20W × 1	500	159	140	182	2.9
SFC-2215	20W × 2	500	159	140	182	3.6
SFC-2315	20W × 3	500	280	260	300	5.6
SFC-4115	40W × 1	500/500	159	140	182	5.3
SFC-4215	40W × 2	500/500	159	140	182	7.5

船用蛍光灯

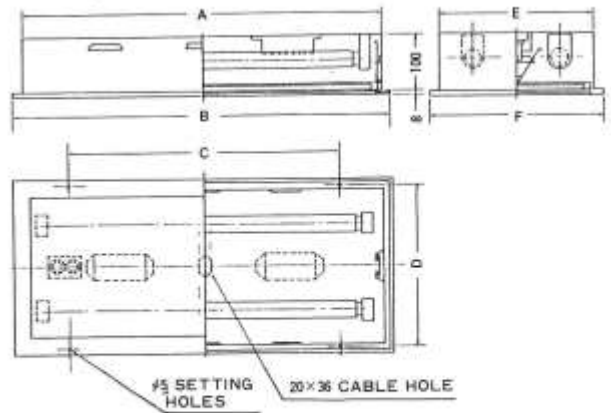
各種類、LED管球タイプも用意しています。



SFC-2269

Specifications

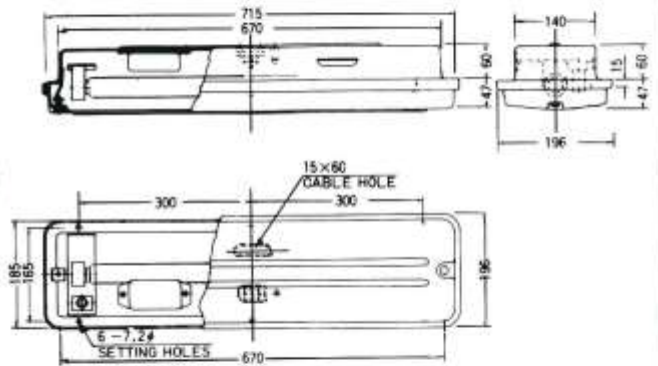
Material: Steel plate (Painting)
Diffuser: MILKY; Acrylite plate
Cable hole: Fig.
Option parts: R type R—Emergency Lamp



Model	Lamp	Dimension						IP 20	
		A	B	C		D	E		F
				Hole	Pitch				
SFC-2169	20W×1	667	700	2×2	500	200	185	220	
SFC-2269	20W×2	667	700	2×2	500	300	285	320	
SFC-2369	20W×3	667	700	2×2	500	300	285	320	
SFC-2469	20W×4	670	710	2×4	450	695	670	710	
SFC-4169	40W×1	1267	1300	4×2	400	200	185	220	
SFC-4269	40W×2	1267	1300	4×2	400	300	285	320	



SFC-2213



Specifications

Material: Steel plate or SUS plate (Painting)
Diffuser: MILKY or CLEAR or OPAL; Acrylite (SFC-73 with Rubber Packing)
Cable hole: SFC-13 Fig. SFC-73 BOTTOM CABLE GLAND
Option parts: R type R—Emergency Lamp

Model	Lamp	Dimension	IP 20
			Weight (kg)
SFC-2113	20W×1	Fig. 1	3.5
SFC-2213	20W×2		4.3
SFC-2173	20W×1	SFC-2113 WT Type	3.8
SFC-2273	20W×2	SFC-2213 WT Type	4.6

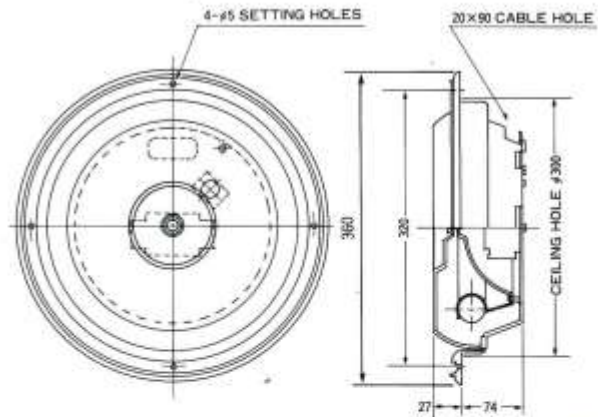




FCC-18-30 (CLEAR)

Specifications

Material: ABS resin (BASE COLOR N9.5)
Diffuser: MILKY or CLEAR: Acrylite
Cable hole: Fig.
Option parts: R type R—Emergency Lamp



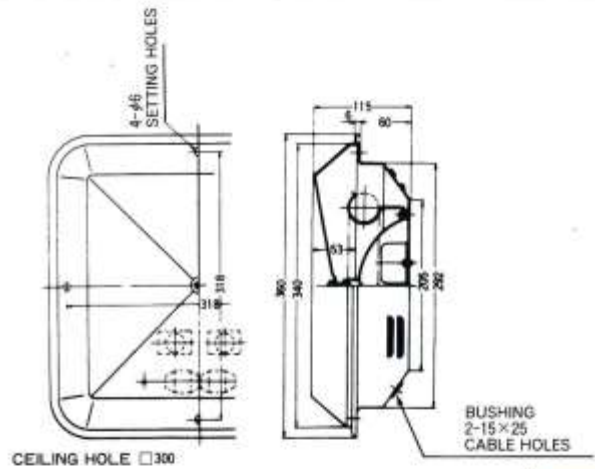
Model	Lamp	Dimension	IP 20 Weight (kg)
FCC-18-20	20W×1	Fig.	1.3
FCC-18-30	30W×1	Fig.	1.5



FCC-08-30

Specifications

Material: Steel plate (Painting)
Diffuser: MILKY or CLEAR or DIAMOND CUT (CLEAR): Acrylite
Cable hole: Fig.
Option parts: R type R—Emergency Lamp



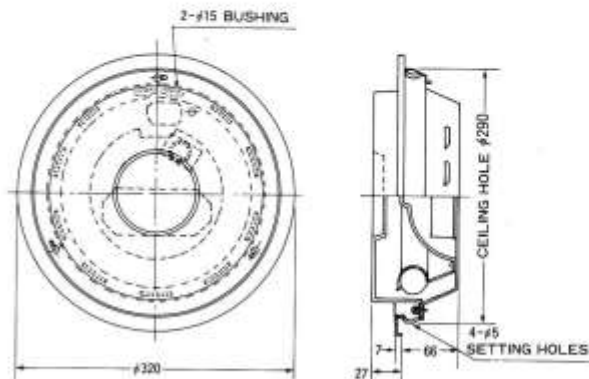
Model	Lamp	Dimension	IP 20 Weight (kg)
FCC-08-20	20W×1	Fig. 2	2.5
FCC-08-30	30W×1		2.7



FCC-06-30

Specification

Material: Steel plate (Painting)
Diffuser: MILKY or CLEAR or DIAMOND CUT (CLEAR): Acrylite
Cable hole: BUSHING (P-3 CABLE HOLES)
Option parts: R type R—Emergency Lamp



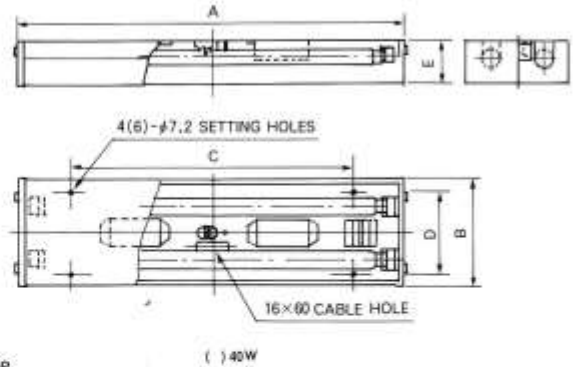
Model	Lamp	Dimension	IP 20 Weight (kg)
FCC-06-20	20W×1	Fig.	1.4
FCC-06-30	30W×1		1.6



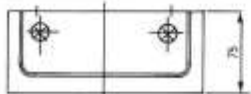
SFC-2216
STANDARD(H-75 TYPE)

Specifications

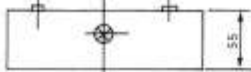
Material: Steel plate (Painting)
Diffuser: MILKY or CLEAR or DIAMOND CUT (CLEAR):Acrylite
 (MILKY don't change CLEAR and DIAMOND CUT)
Cable hole: Fig.
Option parts: R type R=Emergency Lamp
 H-55 TYPE



STANDARD



(H-55 TYPE)

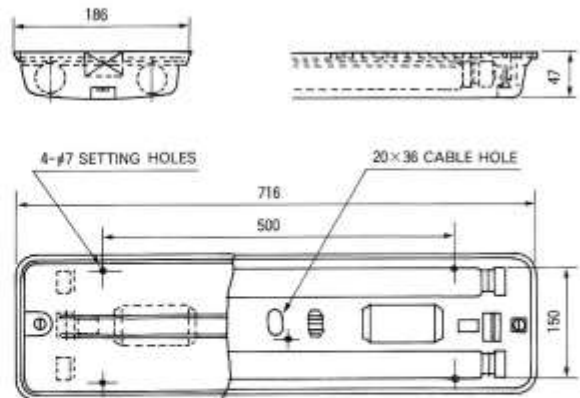


Dimension D=SETTINGHOLE PITCH
 (H-55)=140
 (H-75)=120

Model	Lamp	Dimension					IP 20 Weight (kg)
		A	B	C	D	E	
SFC-2116	20W×1	662	180	480	120	75/55	2.6
SFC-2216	20W×2	662	180	480	120	75/55	3.2
SFC-2316	20W×3	662	300	480	230	75/55	5.2
SFC-4116	40W×1	1272	180	550/550	120	75/55	4.5
SFC-4216	40W×2	1272	180	550/550	120	75/55	5.2



SFC-2240



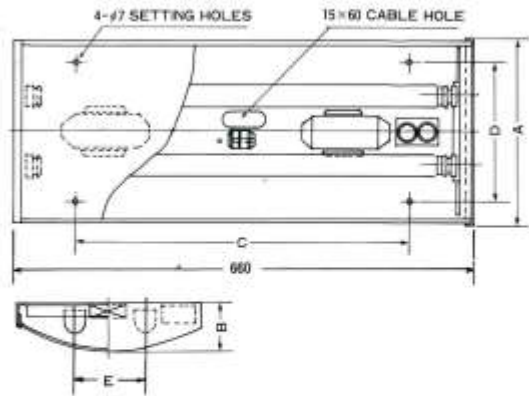
Specifications

Material: Steel plate (Painting)
Diffuser: MILKY or CLEAR or OPAL:Acrylite
Cable hole: Fig.
Option parts: R type R=Emergency Lamp

Model	Lamp	Dimension	Fig.	IP 20
				Weight (kg)
SFC-2140	20W×1			2.2
SFC-2240	20W×2			2.8



SFC-2235



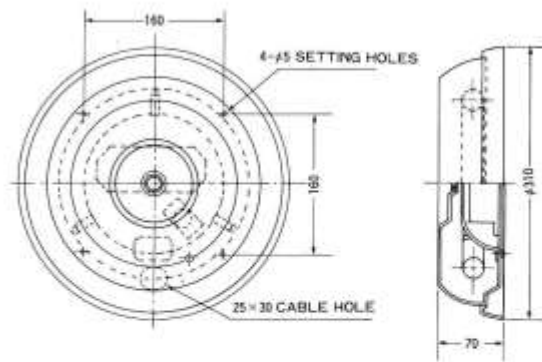
Specifications

Material: Steel plate (Painting-N9.5:Body)
ABS resin (Base Color White:Side cover × 2)
Diffuser: MILKY:Acrylite plate
Cable hole: Fig.
Option parts: R Type R-Emergency Lamp

Model	Lamp	Dimension					IP 20 Weight (kg)
		A	B	C	D	E	
SFC-2135	20×1	220	53	500	140	—	2.1
SFC-2235	20×2	260	70	500	230	100	2.7
SFC-2335	20×3	260	70	500	230	85/85	3.3



FCC-16-30



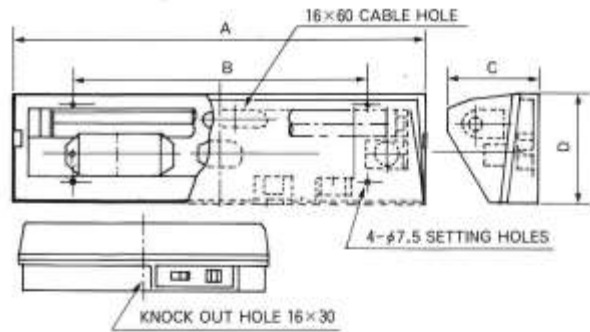
Specifications

Material: Steel plate (Painting)
Diffuser: MILKY or CLEAR:Acrylite
Cable hole: Fig.
Option parts: R Type R-Emergency Lamp

Model	Lamp	Dimension	Fig.	IP 20 Weight (kg)
FCC-16-30	30W×1		Fig.	1.7



SFB-1130 SK TYPE



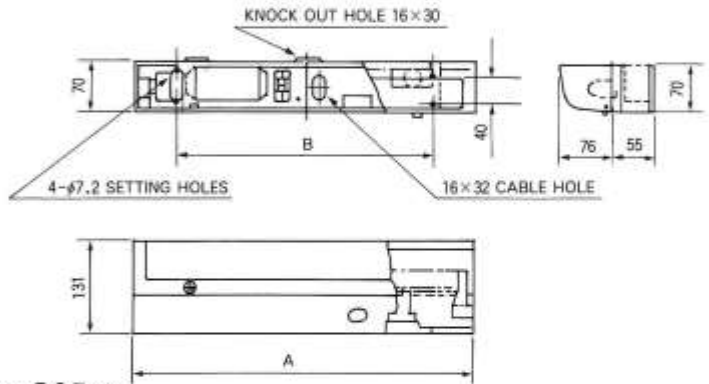
Specifications

Material: ABS resin (Base Color-Ivory:Body)
Steel plate (Painting:Switch plate)
Diffuser: MILKY or FROSTED GLASS
(CLEAR):Styrol resin
Cable hole: Fig.
Option parts: S Type·SK Type·R-SK Type·
R-SSK Type·R-S Type
S=Switch·K=Receptacle
R=Emergency Lamp
with Steel cover (Painting)—SFM

Model	Lamp	Dimension					IP 20 Weight (kg)
		A	B	C	D	E	
SFB-8130	8W×1	393	280	90	110	78	0.8
SFB-1130	10W×1	393	280	90	110	78	0.8
SFB-1530	15W×1	490	340	90	110	78	1.0
SFM-8130	8W×1	SFB-8130 with Steel cover (Painting)					1.0
SFM-1130	10W×1	SFB-1130 with Steel cover (Painting)					1.0
SFM-1530	15W×1	SFB-1530 with Steel cover (Painting)					1.2



SFT-1529 S TYPE



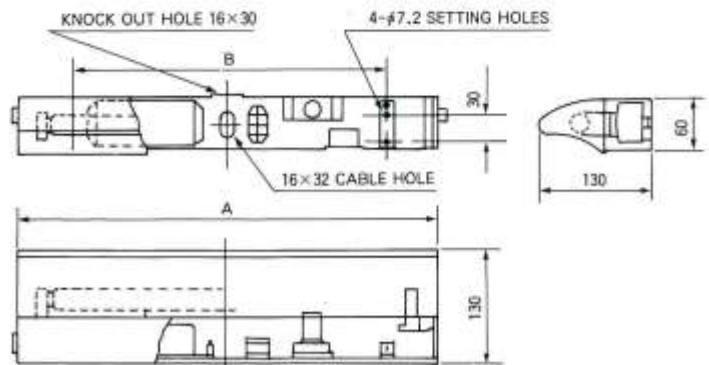
Specifications

Material: Steel plate (Painting)
Diffuser: MILKY or CLEAR:Acrylite
Cable hole: Fig.
Option parts: S Type·SK Type·R-SK Type·R-SSK Type·R-S Type
S=Switch·K=Receptacle·R=Emergency Lamp

Model	Lamp	Dimension		IP 20 Weight (kg)
		A	B	
SFT-8129	8W×1	320	290	1.4
SFT-1129	10W×1	380	290	1.65
SFT-1529	15W×1	480	360	1.8
SFT-2129	20W×1	650	500	2.5



SFT-1528 S TYPE



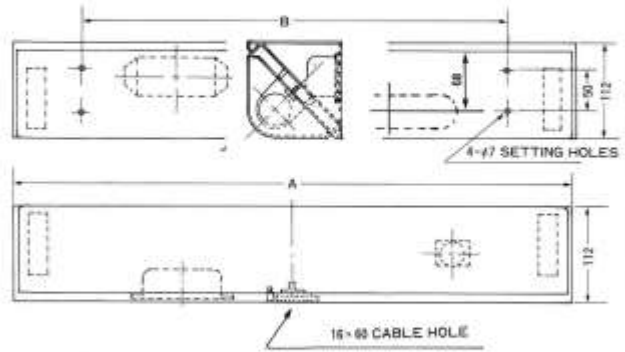
Specifications

Material: Steel plate (Painting)
Diffuser: —
Cable hole: Fig.
Option parts: S Type·SK Type·R-SK Type·R-SSK Type·R-S Type
S=Switch·K=Receptacle·R=Emergency Lamp

Model	Lamp	Dimension		IP 20 Weight (kg)
		A	B	
SFT-8128	8W×1	320	290	1.1
SFT-1128	10W×1	380	290	1.5
SFT-1528	15W×1	480	360	1.8
SFT-2128	20W×1	625	500	2.4



SFP-2118



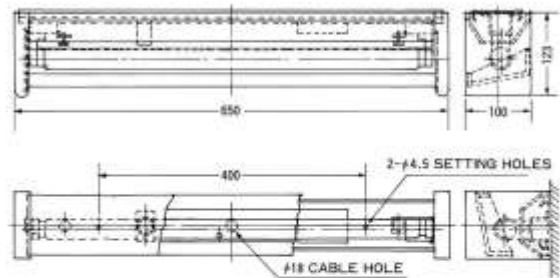
Specifications

Material: Steel plate (Painting)
Diffuser: MILKY or CLEAR:Acrylite
Cable hole: Fig.
Option parts: R Type R-Emergency Lamp

Model	Lamp	Dimension		IP 20 Weight (kg)
		A	B	
SFP-2118	20W×1	665	500	3.0



SFP-2138



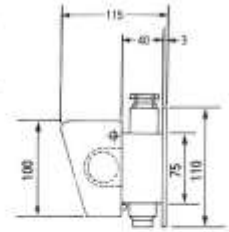
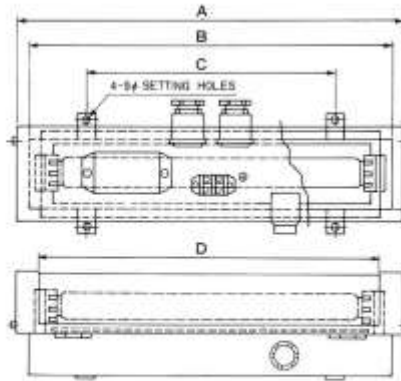
Specifications

Material: Steel plate (Painting or Plating)
Diffuser: MILKY:Acrylite
Cable hole: Fig.
Option parts: Push S Type S=Switch

Model	Lamp	Dimension		IP 20 Weight (kg)
		A	B	
SFP-2138	20W×1	Fig.	Fig.	2.2



SFS-1522



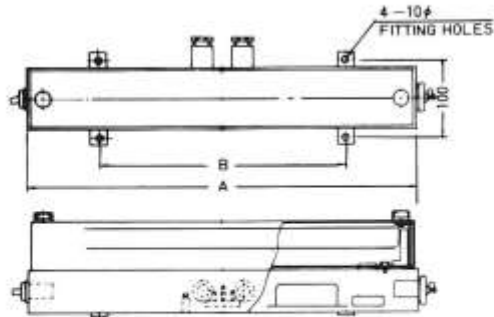
Specifications

Material: Steel plate (Painting)
Diffuser: MILKY/Acrylite
Cable hole: CABLE GLAND (P-3 CABLE HOLES)
Option parts: R Type
 R—Emergency Lamp

Model	Lamp	Dimension				IP 44 Weight (kg)
		A	B	C	D	
SFS-1122	10W×1	420	395	270	370	2.7
SFS-1522	15W×1	526	500	360	473	3.2
SFS-2122	20W×1	670	645	500	620	4.0



SFS-1123 SK TYPE



Specifications

Material: Steel plate (Painting)
Diffuser: MILKY or CLEAR/Acrylite
Cable hole: CABLE GLAND (P-3 CABLE HOLES)
Option parts: S Type-SK Type-R Type-R-S Type
 S—Switch · K—Receptacle
 · R—Emergency Lamp

Model	Lamp	Dimension		IP 44 Weight (kg)
		A	B	
SFS-8123	8W×1	404	320	2.5
SFS-1123	10W×1	404	320	2.6
SFS-1523	15W×1	504	320	2.8
SFS-2123	20W×1	670	500	3.1

船用蛍光灯

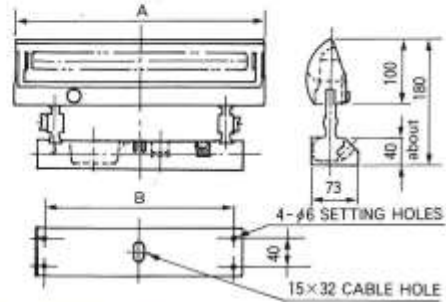
各種類、LEDタイプも用意しています。



SFT-1520

Specifications

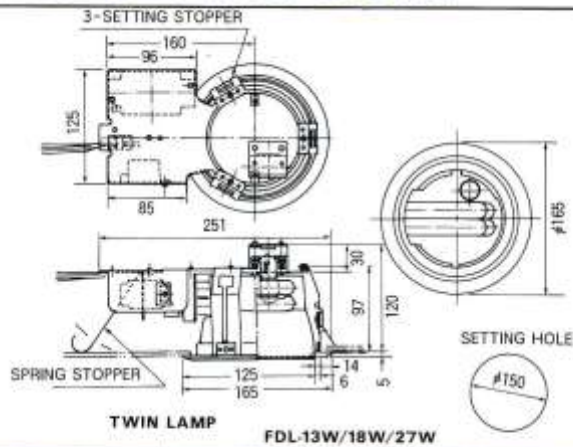
Material: Steel plate (Painting)
 Diffuser: — (Moving Shade)
 Cable hole: Fig.
 Option parts: ((SK Type: Standard))
 S—Switch-K— Receptacle
 GLOW STARTER



Model	Lamp	Dimension		IP 20 Weight (kg)
		A	B	
SFT-1120	10W×1	370	275	1.5
SFT-1520	15W×1	478	330	1.7
SFT-2120	20W×1	620	485	2.3



SFDL-1-18




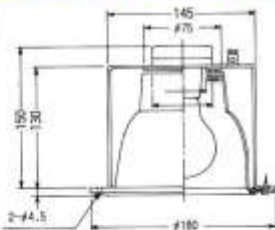


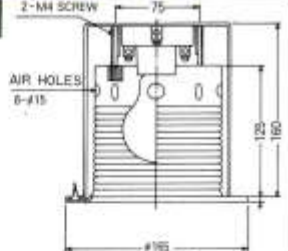
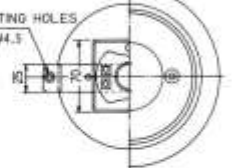

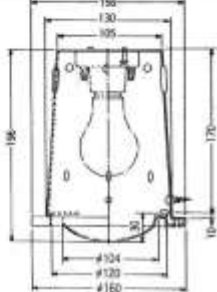
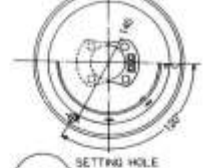
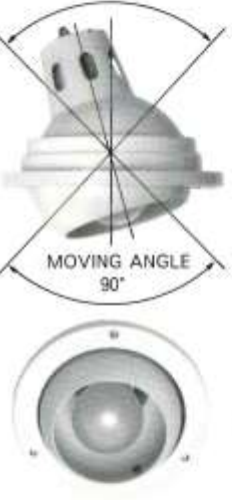

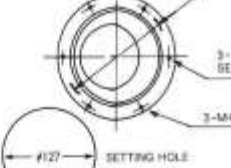


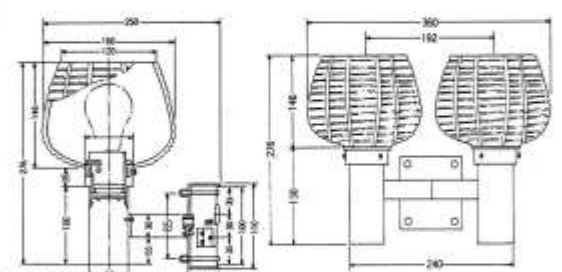
Specification

Option parts: R Type
 R—Spare Lamp

Model	Lamp	Dimension	IP 20 Weight (kg)
SFDL-1-13	FDL13×1		1.2
SFDL-1-18	FDL18×1		
SFDL-1-27	FDL27×1		

船用蛍光灯

各種類、LEDタイプも用意しています。

<p>IL-CD-5</p> 	 <p>SETTING HOLES</p>  <p>SETTING HOLE φ150</p> <p>500g</p> <p>100W~40W</p>	<p>IL-CD-6</p> 	 <p>2-M4 SCREW</p> <p>AIR HOLES 6-φ15</p> <p>FITTING HOLES 2-φ4.5</p>  <p>SETTING HOLE φ135</p> <p>700g</p> <p>100W~40W</p>
<p>IL-CD-7</p> 	 <p>SETTING HOLES</p>  <p>SETTING HOLE φ130</p> <p>500g</p> <p>60W~40W</p>	<p>IL-SP-1</p>  <p>MOVING ANGLE 90°</p>	 <p>4-φ15 AIR HOLES</p> <p>SETTING HOLES</p>  <p>SETTING HOLE φ127</p> <p>350g</p>
<p>IL-60-BD-1</p> 	<p>IL-60-BD-2</p> 	 <p>(COMMON) 4-φ7.2 SETTING HOLES 2-φ16 BUSHING</p> <p>100W~40W</p> <p>IL-60-BD-1 1.6kg IL-60-BD-2 2.7kg</p>	

[白熱蛍光灯具一覧表]

会社名 大阪電機工業株式会社

OSAKA ELECTRIC IND. CO.,LTD.

所在地 <本社>

〒540-0005

大阪市中央区上町1丁目11番15号

<製造・部品センター>

大阪市天王寺区堂ヶ芝2丁目10番17号

TEL 06-6762-2818 (代)

FAX 06-6762-2852

ホームページ <https://osakadenki.com/>

メール info@osakadenki.com

代表取締役 中谷 晴信

資本金 2,000万円

大阪電機 船舶

検索

社員数 16名

創業 大正 2年 (1913年)

設立 昭和48年 (1973年)



本社工場

主要取引銀行

三菱UFJ銀行 上本町支店

三井住友銀行 阿倍野支店

りそな銀行 玉造支店

阿波銀行 大阪支店



堂ヶ芝 製造・部品
センター

所属団体

財団法人 日本船舶技術研究協会

一般社団法人 日本船舶電装協会

近畿船舶用工業会

大阪商工会議所

